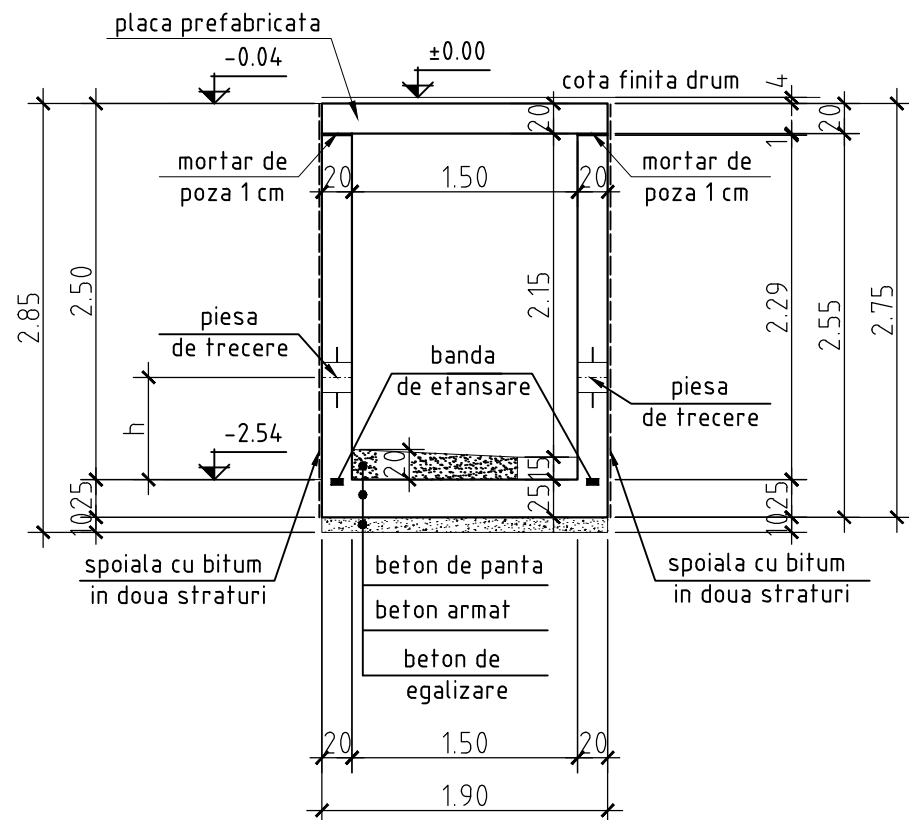


## PLAN COFRAJ CAMIN TIP 9

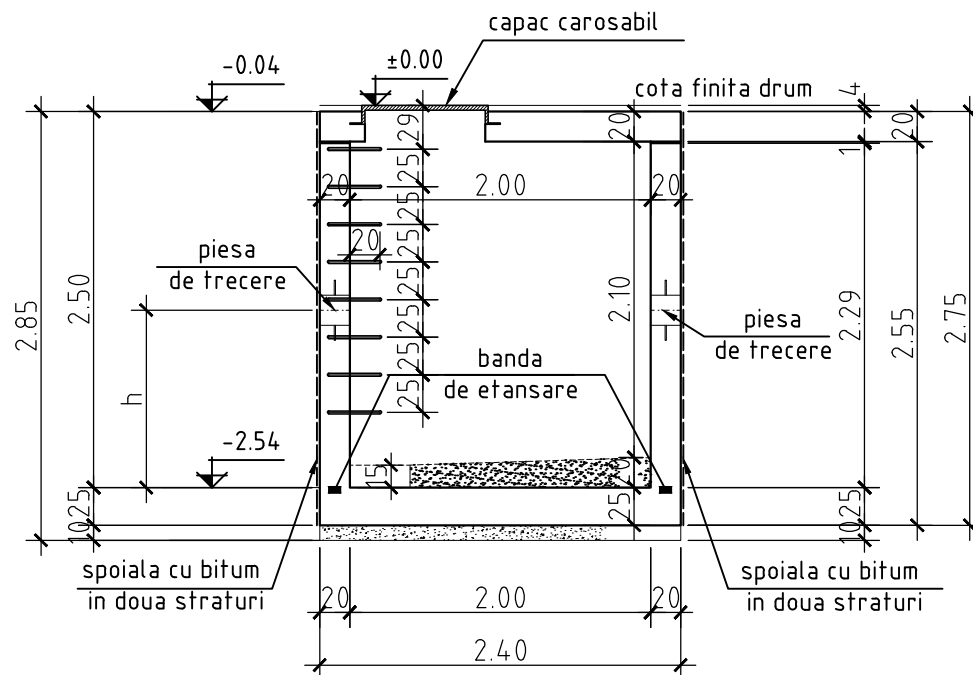
## SECTIUNEA 1-1

SCARA 1:50

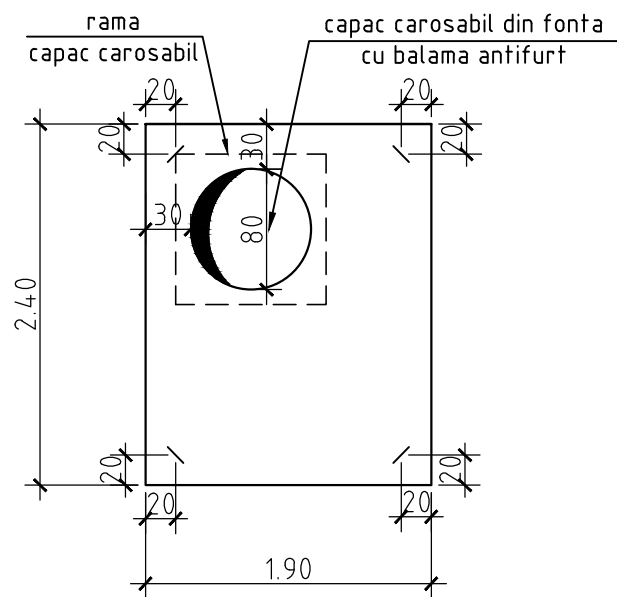


## SECTIUNEA 2-2

SCARA 1:50

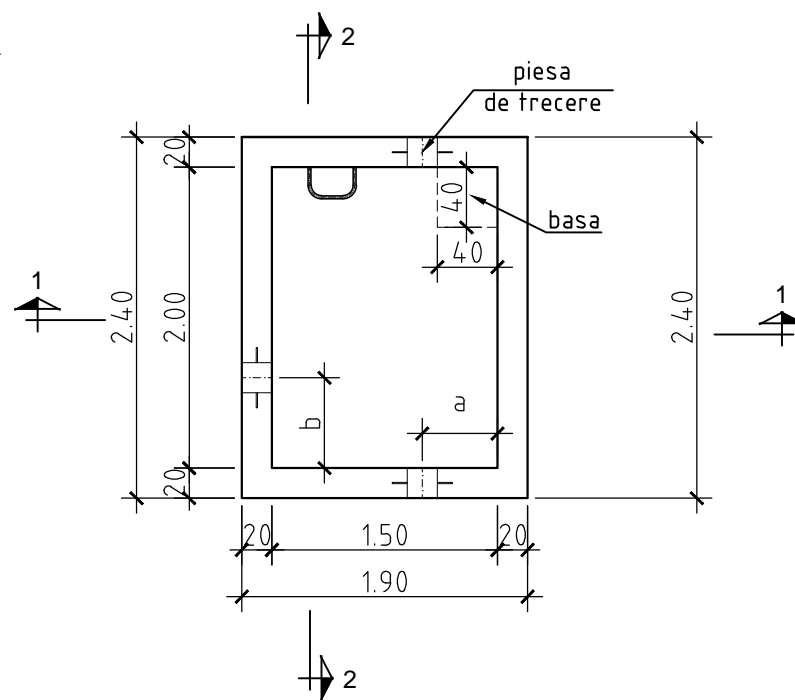


PLAN COFRAJ  
PLACA PREFABRICATA



## SECTIUNE ORIZONTALA

SCARA 1:50



CLASA DE IMPORTANTA (conf. STAS 10100/0-75)	C
CLASA DE CONSTRUCTIE (conf. P 100-2004)	III
CLASA DE CONSTRUCTIE (conf.HG 766/1997- Norme privind stabilirea categoriei de importanta a constructiilor) -	C

Rev	Nume	Ver	Aprb	Data	Descriere

Autoritatea contractanta: **S.C.AQUACARAS S.A. CARAS SEVERIN**



Adresa: P-ta Republicii, nr. 7, Resita  
Jud. Caras Severin  
Tel.: +40 255 212 458  
Fax.: +40 255 214 421  
E-mail: [office@aquacaras.ro](mailto:office@aquacaras.ro)


Proiectant: **Consorțiu S.C Eptisa Romania  
S.R.L. și Eptisa Servicios de Ingeniería S.L.**  
Șos. Ducești-Pantelimon nr. 42, RAMS center, et. 5, corp A,  
sector 3, București  
Tel: +40 21 301 14 70  
Fax: +40 21 301 14 80  
[www.eptisa.com](http://www.eptisa.com)

The logo for Eptisa, featuring the word "eptisa" in a stylized font. The "e" and "p" are blue, while the "t" is orange. The "i" and "s" are blue, and the "a" is orange. The letters are bold and modern.

Project: **MODERNIZAREA INFRASTRUCTURII DE  
APA SI APA UZATA IN JUDETUL  
CARAS SEVERIN - AGLOMERAREA RESITA**

Plansa:

Retele apa  
Camin tip 9-Plan Cofraj

Desenat:	Ing. B. Paraschiv	Data: Feb. 2013
Verificat:	Ing. M. Serbanoiu	Data: Feb. 2013
Aprobat:	Ing. D. Spiridon 	Data: Feb. 2013

Plansa nr.

CS-RE-PT/DA-A-R-9.1

Revizia
---------

0